

Directed by Adrian Elfenbaum



Tartuffe

**Sept. 12-
Oct. 12
2025**

BY MOLIÈRE, TRANSLATED BY RICHARD WILBUR



TICKETS RossValleyPlayers.com | 415-456-9555

Design: Mark Shepard



WAIT UNTIL DARK

November 14 - December 14, 2025

From the Executive Producer

Since its inception in 1930 as a meeting place for our community, The Barn and Ross Valley Players have been a place of connection where we delight in the shows and in each other.

The intimacy of The Barn as a theatrical venue is one of its major attractions. The warm décor and its beautiful setting on the grounds of the Marin Art & Garden Center invites us to enjoy our experience in many ways.

We gather to share stories both about The Barn and about the shows we've seen on its stage. We wonder at the spectrum and complexity of human experience portrayed in each production; we meet new friends - and enjoy the companionship that naturally arises when experiencing live theater together.

This 96th season we will laugh at the antics of *Tartuffe*, thrill at the suspense of *Wait Until Dark*, sing along with the heroics of *The Hello Girls*, fall in love with the romance of *Tu Solo Tu*, and cheer and chuckle together at the adventures of *Ms. Holmes & Ms. Watson, Apt. 2B*.

Thank you for joining us! We strive to make Ross Valley Players' Barn Theater one of the most delightful, comfortable and affordable live theaters in the San Francisco Bay Area - a home for artists and audiences alike. We hope that you enjoy *Tartuffe* and that you'll bring family and friends, become a subscriber, and make RVP your theater home.

Welcome to The Barn!

Steve Price

The Hello Girls



March 27 - April 12, 2026

RVP NEW WORKS



Tú Sólo Tú

You Only You



Ms. HOLMES & Ms. WATSON, APT. 2B

Please Join RVP for Our Delightful New Season



The Barn Theater at
Marin Art & Garden Center
Sir Francis Drake Blvd.
at Lagunitas, Ross

DESIGN: MARK SHEPARD

A PROUD MEMBER OF



80 YEARS

Find us on Facebook

RVP GRATEFULLY ACKNOWLEDGES OUR SUPPORTERS



Ross Valley Players Board of Directors

Allan Casalou, *President* • Steve Price, *Vice President, Executive Producer*
Glenn Koorhan, *Treasurer* • Ellen Goldman, *Secretary*
Phil Garratt, Maureen Kalbus, Dee Kordek,
Vic Revenko, Alex Ross and Carol Winograd

Tartuffe By Molière

Translated into English Verse by Richard Wilbur

SETTING

Orgon and Elmire's home, Southern California, Late 1960s

CHARACTERS

MME. PERNELLE, Orgon's mother	Tamar Cohn
ORGON, Elmire's husband	Douglas Nolan
ELMIRE, Orgon's wife	Stephanie Hunt*
DAMIS, Orgon's son, Elmire's stepson	Nic Moore
MARIANE, Orgon's daughter, Elmire's stepdaughter, in love with Valere	Chloris Li
VALERE, in love with Mariane	Eliot Hall
CLEANTE, Orgon's brother-in-law	Evan Held
TARTUFFE, a hypocrite	Steve Price
DORINE, Mariane's lady's-maid	Emily Anderson*
M. LOYAL, a bailiff	Robert Molossi
A POLICE OFFICER	Ceanna Saatsaz
FLIPOTE, Mme. Pernelle's maid	Raysheina de Leon-Ruhs

Presented by special arrangement with Dramatists Play Service, Inc.



Perotti and Carrade is a full-service tax, audit, and accounting firm, dedicated to providing our clients with professional, personalized services and guidance in a wide range of financial and business needs.



P&C

PEROTTI & CARRADE

Certified Public Accountants

415.461.8500 | www.pc-cpas.com
1 McInnis Parkway, Suite 200
San Rafael, CA 94903

UNDERSTUDIES

Mme. Pernelle, Elmire	Helen Kim
Dorine, Mariane, Flipote, Officer	Alexandra Fry
Cleante, Orgon, Tartuffe	Robert Molossi
Damis, Valere, Loyal	Thomas Peterson

PRODUCTION TEAM

Producer	Steve Price
Director	Adrian Elfenbaum
Stage Manager	Benjamin Vasquez
Assistant Stage Managers	Raysheina de Leon-Ruhs & Robert Molossi
Set Design	Mikiko Uesugi**
Costume Design	Valera Coble
Lighting Design	Michele Samuels
Sound Design	Billie Cox
Properties Design	Dianne Harrison
Choreographer	Jannely Calmell
Intimacy-Movement Coordinator	Molly Noble
Dialect Consultant	Molly Noble
Fight Choreographer / Fight Captain	Nic Moore
Dance Captain	Raysheina de Leon-Ruhs
Master Builder	Michael Walraven
Costume Support	Jesse Israel & Emily Mills
Photographer	Robin Jackson
Graphic Design	Mark Shepard
Program Consultants	Suzie Hughes & Nancy Wilson
Volunteer Coordinator	Eleanor Prugh
Web Manager	Andy Wilson
Lobby Flowers & Décor	Maureen Kalbus

Special Thanks to Sebastien Pridmore, Joshua Ende, Amy Freed, College of Marin, Santa Rosa Junior College, Sonoma State University, Dave White, Joy Ambra, Winton Warehouse, Signature Smiles, Robert Molossi and Frank Sarubbi

*Appears through the courtesy of Actors' Equity Association, the Union of Professional Actors and Stage Managers in the United States
** United Scenic Artists USA Local 829, IATSE.

PRODUCTION SPONSORS

Tessera Trademark Screening, The Jeannette Fund, Allan Casalou and Billy Lynam are proud to support *Tartuffe* and artistic excellence at Ross Valley Players.

Director's Notes

Molière (born Jean-Baptiste Poquelin)ʼs landmark play, *Tartuffe*, was banned after its original performances in the mid-1660s. France was transitioning from the dominant leadership of the Catholic Church to accepting the growing, independent authority of a then-young Louis XIV. But both the Church and Louis agreed that *Tartuffe*, in its original form, was unacceptable.

The objection was not to the character Tartuffe, a fraudulent religious zealot. Rather it was the character Orgonʼs blind adherence to Tartuffeʼs dictates that raised concern. Driven by his fanatical attraction to Tartuffeʼs religious idealism, Orgon effectively prostitutes his daughter, disinherits and disavows his son, betrays and humiliates his wife, and renounces his fortune. The implication that Orgonʼs irrational behavior was caused by his devout religious belief was too much to countenance, even in an obvious satire.

Five years later, after several revisions, including a new concluding scene celebrating the insightful wisdom of the king, the play was given another chance. When remounted, *Tartuffe*ʼs delightful combination of humor and social criticism triumphantly thrived at the Comedie Francaise, and the brilliant play survives for us as a classic comedy, today.

Molièreʼs examination of zealotryʼs destabilizing effect within a changing world remains topical. For this reason, we decided to set *Tartuffe* in a modern context. The social climate of California in the late 1960s provides an excellent example of rapid change clashing with traditional social values. And the fashion, music, and interior design of the late 1960s are always fun to revisit, too. We hope you enjoy *Tartuffe*!



Director's Bio

Adrian Elfenbaum (Director) happily returns to Ross Valley Players where he has directed award-nominated productions of: *The 39 Steps* (2017); *The Mousetrap* (2019); *Picnic* (2022 - Winner, Bay Area Theatre Critics Circle Best Production - North Bay Small Theatres); *It's a Wonderful Life – A Live Radio*

Play (2023); and *Crossing Delancey* (2024 - Winner, Bay Area Theatre Critics Circle Best Production - Entire Bay Area Small Theatres). Other North Bay credits include award-nominated productions of *Medea* and *Dead Accounts* at College of Marin, and several plays at Sonoma State University, including: *Much Ado About Nothing*; the operas *Bastien and Bastienne*, *The Old Maid and the Thief*, and Leonard Bernsteinʼs *Trouble in Tahiti*; and the musicals *A Little Night Music*, *Company*, *Oklahoma!* and *Fiddler on the Roof*. Adrian has worked with many Bay Area theatre companies as an actor or director, including Marin Shakespeare, TheatreWorks, Magic Theatre, PlayGround, and San Franciscoʼs Word for Word, with which he has participated on stage or behind the scenes since their first season over thirty years ago. Adrian holds an MFA in Acting from UC Davis. Adrian thanks the generous and creative cast of *Tartuffe*, and once again thanks the talented and collegial production team at RVP with whom itʼs always a joy to work. Adrian is forever grateful to JoAnne, Ben and Jack, for their continuous patience and loving support.

Playwright's Bio

Molière (1622-1673) is the pseudonym for Jean Baptiste Poquelin, one of the greatest comic geniuses the world has seen, and undoubtedly the master of "social comedy." Almost singlehandedly, he prompted international acclaim for French social comedy and established the form as one of the more enduring types of comedy. In the plays, he analyzed many aspects of his contemporary society and penetrated into the essential characteristics of various types of people. His critical insights into the nature of types like the hypocrite, the misanthrope, and the miser remain almost as urbane today as they were when written.

Molière was born in Paris, France, in 1622, the son of rather prosperous middle-class parents who sent him to good schools to be trained in law. However, somewhere along the way, Molière fell in love with the theater and was to devote his entire life to the theatrical profession.

He probably received a law degree in about 1641–1642, but thereafter he joined three other people to form a theater company called L'illustre Théâtre. At this time, acting was not held in the highest esteem, to begin with, so when Molière consorted with a woman in his troupe named Madeleine Béjart, it only proved to his bourgeois parents that their son was



lost. Molière was actually to remain acquainted with this woman for the rest of her life. In 1662, he married nineteen-year-old Armande Béjart, a vivacious flirt who gathered numerous admirers around her, much to the chagrin of her husband. Legend has it that four years later, Armande would become the model for the capricious and flirtatious

Célimène in *The Misanthrope*. She did, however, bear him three children before his untimely death in 1673, the third child being born in 1672, the year before Molièreʼs death.

The company Molière helped establish did not fare too well and went bankrupt during its second season. During this time, he was often plagued by creditors, and it was also then that he began to use the name "Molière."

He continued in his career as an actor in another company for about ten more years before he turned his hand to playwriting. In the interim years, he also gained experience in directing and managing. By the time he began to write, he was known as one of the greatest comic actors of his time, and the experience he gained by acting, managing, and directing contributed to his understanding of what was theatrically effective and provided him with a thorough knowledge of the theater.

**YOUNG
FRANKENSTEIN**

**Save the
Date!**

Saturday, October 18 at 2:00pm
MEL BROOKS AT HIS FUNNIEST
FREE Fresh Popcorn & Beverages
Tickets on sale soon!

THE CAST



Emily Anderson (*Dorine*) holds a BFA in Acting from The Theatre School at DePaul University. Theatre: *It's True It's True It's True* (Marin Theatre), *Doomers* (dir. Ash Baker, San Francisco), *Frankenstein* (Lifeline Theatre, Chicago), *Over Easy* (SheNYC). Up next: producer for *Please Don't Slow Me Down* + Bay Area Bar Shakes. With loving dedication to her mom, Nadine, who loved spending time at the beautiful Marin Art & Garden Center. www.emily-a.com



Tamar Cohn (*Madame Pernelle*) Wisconsinite. Macalester College, B.A. - Theatre. San Rafael resident. Ten previous plays at RVP. Also: Central Works, Roustabout, Symmetry, Ubuntu Theatre Project, Theatre Rhinoceros, Cutting Ball, TheatreFirst, CenterREP, A Traveling Jewish Theatre, others. Thanks to director Adrian, our delightful cast, crew, designers, producers and audiences!



Raysheina de Leon-Ruhs (*Flipote*) is a local theatre artist and alumna of College of Marin and SF State. She has participated in many RVP productions, backstage and onstage, and is excited to be here again. Outside of theatre, she can be found out in the woods looking for wild mushrooms!



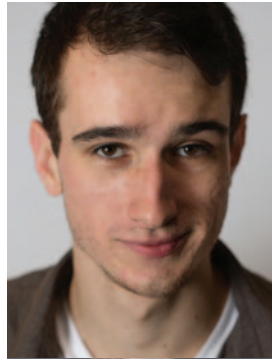
Eliot Hall (*Valere*) is a San Francisco based actor and playwright. He is very excited to perform for the first time at The Barn Theatre. He'd like to thank his family and friends for their support.

Evan Held (*Cleante*) is the Education Program Manager at San Francisco Shakespeare Festival and is excited for his 6th production in The Barn. He's acted at numerous companies across the Bay, including ACT, SPARC, SF Shakes, 6th Street Playhouse, Word for Word, Spreckels, and more! This is his fourth production with director Adrian Elfenbaum and he hopes it won't be his last.

Stephanie Hunt (*Elmire*) is an actor, director, and teacher. She is a longtime company member of the theater group, Word for Word. Training: MFA from the American Conservatory Theater, BA from SFSU. A Mill Valley native, she has directed four productions at CTE, Tam High School. Stephanie is so glad to be working with this company of people on this witty and timely play by Moliere. stephaniejanehunt.com

Chloris Li (*Mariane*) is excited to be making her RVP debut! Recent credits include workshop of *The Weather Busters of Beachcastle* (La Jolla Playhouse), *Desert Rock Garden* (New Village Arts), *Comedy of Errors* (SPARC), and *Where the Mountain Meets the Moon* (South Coast Rep). MS Columbia University. BA/BS UC San Diego. @ichlorisli

Robert Molossi (*Monsieur Loyal*) is a San Francisco native. RVP credits include Dr. Bradman in *Blithe Spirit*; the School Principal in *The Government Inspector*; Mr. Paravicini in *The Mousetrap*; Jemy in *Incidents in the Wicked Life of Moll Flanders*; and Willaim Gillette / Sherlock Holmes in *The Game's Afoot*.



THE CAST



Nic Moore (*Damis*) has performed with several companies across the Bay Area including San Francisco Shakespeare Festival, SPARC Theater, Theatre Rhinoceros, Curtain Theatre, and many more. He is also a combat/intimacy coordinator and a theater educator. He is a graduate of The Meisner Technique Studio in San Francisco. (he/him)



Douglas Nolan (*Orgon*) is delighted to make his debut with RVP! Selected credits include Stanford Rep, ACT, Shakespeare Santa Cruz, Marin Shakes, Cutting Ball, Shotgun Players, Word for Word, Half Moon Bay Shakes. MFA in Acting: American Conservatory Theater. Doug has been clowning and juggling professionally for more than 30 years! RockSteadyJuggling.com



Steve Price (*Tartuffe*) recently appeared as Bottom in *A Midsummer Night's Dream* at Marin Shakespeare Company. Steve has played many roles at RVP including Frank Butley (SFBATCC nomination) in *Native Gardens*, The Mayor in *The Government Inspector* (SFBATCC award for Best Principal Performance in a Comedy) and Howard Bevans in *Picnic* (SFBATCC nomination).



Ceanna Saatsaz (*Police Officer*) is honored to make her RVP debut with this talented cast and crew. Since 2007, she has performed for audiences spanning four continents. Her recent credits include Celia in Vallejo Shakespeare's touring production of *As You Like It*. She is thrilled to serve justice onstage as the Police Officer!



THE HARBOR POINT CHARITABLE FOUNDATION
Enhancing the quality of life for adults and children in need in the San Francisco Bay Area since 2005.

OUR BENEFICIARIES (PARTIAL LIST)



TO CELEBRATE LIFE
BREAST CANCER FOUNDATION



www.hpcf Giving.org

Backstage Bios

Alexandra Fry (*Understudy*) is elated to be part of this production! Between mainstage shows, co-productions, staged readings, and assistant stage management, *Tartuffe* is her tenth project at The Barn. She recently played her favorite Shakespearean character, Imogen in *Cymbeline* (Actor's Ensemble). Outside of theater, she enjoys trying to figure out her twenties.

Helen Kim (*Understudy*) is delighted to be back at The Barn where she understudied *The Book Club Play* and performed in *Reservations*, *The Packrat Gene*, and *Pride and Prejudice*, *The Musical*. Recent credits include *The Taming of the Shrew* (Actors Ensemble of Berkeley), *Into the Breeches!* (Masquers Playhouse), *A Midsummer Night's Dream* (Curtain Theatre), and *CLUE* (Onstage Repertory Theatre).

Thomas Peterson (*Understudy*) is thrilled to continue his work with Ross Valley Players. Since starting his acting career with Shakespeare in the Park, Thomas has appeared throughout the Bay Area and has been awarded for his performances. Most recently, Thomas worked with Curtain Theater's *As You Like It* (Corin) and Novato Theater Company on their production of *Present Laughter* (Roland Maul). (he/him)

Benjamin Vasquez (*Stage Manager*) is happy to be working on this production with the wonderful team at Ross Valley Players. Some past stage management credits at the Barn include *The Diary of Anne Frank*, *The 39 Steps*, *Mousetrap*, *Sylvia*, *Picnic*, and *It's a Wonderful Life – A Live Radio Play*. He would like to thank his family and friends for all their support and also the Drama department and program staff at College of Marin for their guidance and training

Mikiko Uesugi (*Set Design*) has designed sets for *Crossing Delancey* and *It's a Wonderful Life* for RVP. She has also designed for Aurora Theater, Word for Word, Marin Theatre, SFBATCO, Magic Theater, and Shotgun Players, among others. She is a resident artist at Golden Thread, a recipient of SFBATCC Awards and the NEA/TCG Career Development Program for Designers.

Valera Coble (*Costume Design*) recently designed costumes for RVP's *The Book of Will*, *The Spitfire Grill*, *Blithe Spirit* and *Crossing Delancey*. A company member with Berkeley based Shotgun Players since 1999, her more than 50 Shotgun credits include *Macbeth*, *Iphigenia In Aulis*, *Phaedra*, *Three Sisters*, *Mother Courage and Her Children* and *Oedipus Rex*. Valera's work has also been

seen in the Bay Area at Berkeley Repertory Theatre, Aurora Theatre Company, Magic Theatre, Center Repertory Company, San Francisco Playhouse, Crowded Fire, Town Hall Theatre and Word for Word.

Michele Samuels (*Lighting Design*) recently designed College of Marin's *She Kills Monsters* and RVP's *Spitfire Grill*, among others. She was nominated for a SFBATCC Award for RVP's *Glass Menagerie*. Michele's tech career began with Alvin Ailey Dance Theatre, NY. She is Guest Artist in Lighting at Tam High's Contemporary Theatre Ensemble. Michele thanks her family for supporting her career and crazy schedule. (she/her)

Billie Cox (*Sound Design*) has worked with Marin Shakespeare, 6th Street Playhouse, SF Playhouse, Custom Made Theatre, NCTC, Stapleton, Masquers, Alcove, Novato Players,

College of Marin and many others. Her work has brought her ten BATCC nominations, a TBA nomination, two Falstaff Awards and a Dean Goodman Award. Her original play, *A Bearded Lady*, was awarded Best Play of the 2009 SF Fringe Festival.

Dianne Harrison (*Properties Design/Scenic Painter*) received her BA in Technical Theatre from Sonoma State and has worked in props design for many Bay Area theatre companies, including: African-American Shakespeare Company (*Richard II / Romeo and Juliet*), Altarena Playhouse (*A Nice Family Gathering / The Birds*), Napa Valley College (*Seussical: The Musical*), PlayGround SF (*Best of Festival / A Very Hitchcock Christmas*), Ross Valley Players (*It's A Wonderful Life / Crossing Delancey*), and Sonoma State (*In The Heights*, *Love's Labour's Lost / Perfect Arrangement*).

Jannely Calmell (*Choreographer*) is very happy to be working with Ross Valley Players again! She loves The Barn! Jannely has been performing around Marin County for over eight years. Some of her highlighted work includes *Sylvia* at Ross Valley Players, *The Wolves* at Marin Theater Company, *Amy and the Orphans* at Cinnabar Theater and *Native Gardens* at Ross Valley Players. She wants to thank the amazing cast, crew and production team for the opportunity and wonderful experience. She would also like to thank the fabulous audience members for supporting the arts. Enjoy the show!

Molly Noble (*Intimacy and Dialect Consultant*) is happy to be working with Adrian and these wonderful artists at RVP. She founded Porchlight Theatre Company in 2000, bringing Chekhov, Turgenev, Wilde and other great playwrights' work to the adjacent Redwood Amphitheatre for several summers. She's on the Drama faculty at College of Marin. www.mollynoble.com



OSHER LIFELONG LEARNING INSTITUTE

OLLI AT DOMINICAN UNIVERSITY

OLLI is a vibrant Marin community of adults 50 and older.

- Enjoy learning for fun: no tests, no homework.
- Choose from history, science, music, current events and more.
- Courses are offered year-round on campus and on Zoom.
- Intellectual and social engagement boost health and wellbeing.



Join us!
Fall Courses Begin
September 29, 2025
(415) 458-3763
www.dominican.edu/olli



SANDRA BIRD DESIGNS

A Design/Build Firm

ALWAYS YOU. ALWAYS UNIQUE.
SANDRABIRD.COM
415-927-1171
LICENSE #460295

Backstage Bios

Jesse Israel (*Costume Support*) is a teacher, animator, and character designer with a passion for storytelling through crafts. She graduated with a B.A. in History from Haverford College in 2023 and is thrilled to be part of her first theater production since middle school. An avid sewer, she is excited to contribute her love of buttons, bobbins, and bling to the costume design team.

Emily Mills (*Costume Support*) is excited to return to RVP for *Tartuffe!* An alumni of CSU East Bay, Mills can be found sewing and/or dressing for Napa Valley College, Marin Shakespeare Company, Berkeley Rep and more.

Michael Walraven (*Set Construction*) is pleased to be back in the theatre. Michael has also performed on stage at RVP in *Pirates of Penzance* and *The Polynesian Lounge* and in the Mountain Play's *Sound of Music* and *Guys and Dolls*. Favorite roles include Tevye in *Fiddler on the Roof*, Boyd Bendix in *A Case of Libel*, Mr. Cladwell in *Urinetown*, Mr. Mushnik in *Little Shop of Horrors*, Jean in *Miss Julie* and Hogan in *Moon for the Misbegotten*. Michael is now performing weekends as the Count of Buena Vista at Buena Vista Winery.

RVP is part of the Marin Art and Garden Center, which sits within the unceded ancestral homeland of the Coast Miwok people. RVP respects and honors past, present, and future generations of Miwok and their continued connection to this land. RVP is grateful for the opportunity to gather in this place and gives respect to its first inhabitants.

Support the
Marin Art
and Garden
Center and
receive cool
swag + other
benefits!



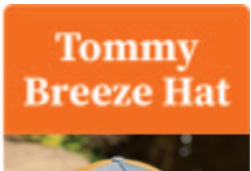
Magnet



Tote Bag



Picnic
Blanket



Water
Bottle

Become a Friend of the Garden Today at maringarden.org/friends



Thank you
for contributing the
great design of the
new RVP Barn
Theater lobby



SDG

SCHEIBER DESIGN GROUP

SDG - Interior Design
www.scheiberdesign.com

Billy Alexander, Design Principal and Owner
billy@scheiberdesign.com
415-686-0523

Tartuffe Synopsis

Act One

Madame Pernelle insists that her family must support her son, **Orgon**, who has welcomed the religious zealot, **Tartuffe**, to live in the family's home and set an example of pious behavior. The family members believe that Tartuffe is an impostor.

Orgon's son, **Damis**, asks his uncle through marriage, **Cleante**, to convince Orgon to allow Damis and his sister, **Mariane**, to choose their own marriage partners.

The family housekeeper, **Dorine**, informs Orgon that in his absence, Orgon's wife, **Elmire**, has been ill. But Orgon is concerned only with whether Tartuffe has been well cared for during his absence.

Cleante tries to convince Orgon that Tartuffe is a fraud; Orgon resists.

Orgon refuses to confirm his continued support of Mariane's engagement to her betrothed, **Valere**.

Act Two

Orgon informs Mariane that she must marry Tartuffe.

Dorine tries to convince Orgon that Mariane will not be faithful to Tartuffe.

Mariane begs Dorine to help her get out of the marriage to Tartuffe.

Valere and Mariane accuse each other of indifference to their engagement.

Dorine brings the couple to a peace and agrees to help them convince Orgon to restore their engagement.

Act Three

Dorine convinces Damis that Elmire should persuade Tartuffe to end his engagement to Mariane.

Damis hides to overhear the conversation between Elmire and Tartuffe.

Tartuffe attempts to seduce Elmire.

Damis reveals that he witnessed Tartuffe's betrayal then tells Orgon that Tartuffe has propositioned Elmire.

Tartuffe does not deny Damis's accusation, but Orgon refuses to believe him.

Orgon disinherits Damis and banishes him.

Disgusted with his family's resistance to Tartuffe's piety, Orgon grants Tartuffe full legal ownership of all the family's assets.

INTERMISSION

Act Four

Cleante tries to convince Tartuffe to end his engagement to Mariane and to persuade Orgon to restore Damis's inheritance. Tartuffe refuses.

Cleante and Elmire demand that Orgon restore his children's rights. Orgon refuses.

Elmire convinces Orgon to hide and witness Tartuffe's unwelcome advances towards her.

Orgon reluctantly agrees to do so.

Unaware that Orgon is listening, Tartuffe brazenly seduces Elmire and openly insults Orgon's intelligence.

Orgon, finally convinced that Tartuffe has deceived him, banishes Tartuffe from their home.

Tartuffe refuses to leave, reminding Orgon that he now possesses legal title to all Orgon's assets.

Act Five

Orgon fearfully reveals to Cleante that he asked Tartuffe to protect a strongbox containing contraband documents.

Damis offers to murder Tartuffe.

Madame Pernelle still refuses to believe that Tartuffe is not pious.

A bailiff, **Monsieur Loyal**, arrives to evict Orgon but agrees to let the family remain in their home overnight.

Madame Pernelle now accepts that Tartuffe is not pious.

Valere warns that Tartuffe has presented Orgon's strongbox to the King, who has issued a warrant for Orgon's arrest.

Valere engineers Orgon's escape, but before they can flee, Tartuffe arrives with an **Officer** to take Orgon to jail.

The Officer surprisingly arrests Tartuffe instead of Orgon, declaring that the King saw through Tartuffe's lies and recognized him as a notorious, wanted criminal.

The Officer announces that the King has pardoned Orgon and restored his property ownership.

Orgon humbly entreats everyone to celebrate Mariane's wedding to Valere.

Come Full Circle with RVP

Connect with the Legacy Circle and shape the future of Ross Valley Players.



Georgia F. Sagues has done just that!

"I've enjoyed RVP productions for years. They are wonderful! I encourage everyone to support RVP, including the Legacy Circle."

Legacy Circle Members include Ross Valley Players in their estate plans in some way—will, trust, life insurance policy, etc. The Board's intention is to invest any funds received in a way to produce a stable income stream to benefit RVP for decades.

Georgia has joined board members, volunteers, and season ticket subscribers in this commitment. No need to tell us the amount of your planned estate gift, only that you will be including RVP as a beneficiary or have already done so.

Contact our Board President, Allan Casalou, at acasalou@gmail.com with questions.

Join the honor roll of donors displayed in the lobby, right by where Georgia is sitting. Help sustain a creative community asset.



Growing Up In A Barn

A History of
Ross Valley Players

The history of
productions at RVP from
1930 to modern days.

Written by Carol
Winograd. Photos
from RVP archives.

\$20. Available in the
lobby or on-line at
rossvalleyplayers.com



2024 Donors

Thank you to all our generous 2024 donors! The list of donors below is for donations received January 1, 2024 through December 31, 2024. Donations received during the calendar year 2025 will be acknowledged in the programs for performances in the 2025-2026 season. If we inadvertently made an error in your listing, please accept our apologies and let us know by contacting Ellen at: noscaasi@comcast.net or by leaving a message on 415-456-9555, ext. 3

PHILANTHROPIST \$5000 +

Allan Casalou and
Billy Lynam
Robert Kaliski and
Linda Nelson
Alex and Tinka Ross
Estate of Heather Preston
Tricoastal Foundation

ANGEL \$1000-\$4999

Kim Bromley and
David Carson
Jerry Cahill and
Kathy King
Steven De Hart and
Sheldon Donig
Julie D Dickson
Cami Eichar
Douglas and
Jane Ferguson
Sugar and Gus Filice
Michael Fottrell
Bruce and Eva Gibbs
Ellen and Bob Goldman
Dee Kordek
Lynn Lohr
Jay Manley and
Vance Martin
William E. Raudio
Victor Revenko
Georgia F. Sagues
Lori Viti and
Christopher Timossi
Nancy Wolcott
Phyllis M Wright

PRODUCER \$500-\$999

Stephanie and
Tom Ahlberg
Mary Jane Baird
Greg Brockbank
Ron Clyman and Françoise
Mauray
Drake Terrace
Karen Fry
Robert Hall
Joyce K. Kami
Nicholas Kayhan

Ronald Krempetz and
Diane Judd
Marguerite Leoni
Lynn R. MacDonald
Jennifer McGeorge
Sean O'Brien
Richard Royse
Diane and Ed Ryken
Dorene and
Robert Schiro
Virginia Turner
JoAnne Winter and
Adrian Elfenbaum

DIRECTOR \$250-\$499

Harold and Virginia
Anderson
Jay R. Beasley Jr.
George and
Sheila Bertram
Bruce and Janie Burtch
Teta Collins
Jill Connolly
Arthur Davidson
Lauri R. Flynn
Mark and Carole
Friedlander
Judith Jaslow
Russ and Kathy Ketron
Glenn Koorhan
Robert and
Judith Leedy
Kathleen and
John Leones
Christopher A. Moffat
Kay and Mark Noguchi
Susan C. Peters
Becky and Larry Reed
Richard and
Marilyn Riede
Randolph and
Carol Selig
Steve and
Judith Stromberg
Arlene and Irwin Taranto
Alexander Vollmer
Patrick Walsh and
Scott Binnings
Nancy and
John Zeravich

STAGE MANAGER \$100-\$249

Laraine Allen
Jerry and Susan Angel
Kirk and Joan Beales
Peter and Helene Bence
Richard Bottega
Dorothy L Breiner
Sally Buehler
Sharon Burns
Karen J Carmody
Larry Clinton
Tamar Cohn
Claudia Cole and
Carlos Brown

Michael Cole
Pam Crane
Christina B. Crow
Adrianna Dinihanian
Stephanie Douglass
Mary Ann and
Malcolm Dunlap
Mitchell K. Field in loving
memory of Jackie Field
Laszlo and
Rosemarie Folk
Julie S Frank
Mervin and Gail Giacomini
Burt Greenspan
Kevin Hagerty and
Candace del Pontillo
David Hanchette
Carol-Joy Harris and
Bill Davis
Yvonne Herico
Kathy Hyde and
Clifford Sennello
Marilyn Izdebski
Charlotte Jacobs
Elizabeth Jameson
Maureen and
Ralph Kalbus
Barbara Leopold
Victor and Ellen Levin
Mary-Ann Milford
Joseph McDonald
William McNicholas
Mary Mizroch
Emiko Moore
George and
Claire Nadeau

Neil and
Joanne Nevesny
Paula Olney
Tom and Jan Perry
Zdenka Pisarev
Pamela Rand
Thomas Reilly
Jennifer Reimer
Jillian Robinson
Sharon Burns
Deborah Ruth
Julie and Bill Ryan
Maureen and Heinz
Scheuenstuhl
Jon Schmidt
Terry Seligman
Alice Shelton
Cynthia Sima and
George Brown
Therese Stawowy
Paul and
Sandy Steinman
Elizabeth Lyons Stone
Jean Sward
Cynthia Swift
Ann Thomas
Larry Van Note and
Linda Bell
Dennis Wulkan

STAGE CREW Under \$100

Patricia Albo
Keith and Holly Axtell
Judy Baldassari
Joan Beavin
Ann Peckenpaugh Becker
Christina Bird
Melinda Booth
Jed Borghei
Janet Braff
Joan Braun
Ted Bravos
Robert Brooks
Steve Brown
Sondra Card
Alla Chesnokova
Kathleen Clark
Laura L Collins
Eve Colloton
Joan Corey

Susan Creighton
Travis Darcy
Jane Z. Delahanty
Donelle Delong
Ruth Devivo
Marcia DeZwarte
Thomas Diettrich
Dorrie Dodge
Julie Durbin
Larry Eggan
Terry Epstein
Angela Falcone
Pam Feagles
James Christopher Felchlin
Eileen and
Andrew Fisher
Phyllis Galanis-Fedanzo
Robert Garlick
Laura Goff
Gerry H Goldsholle
Patricia Goodman
Cynthia Greenberg
Laurie Gregg
Gregory Greunke
Marijane Guy
Katy Halbrook
Thomas Harlan
Karen Harrell
Mark Hoffman
Jen Hom
Lauren Howard
Laura E Jacobson
Anne Johnston
Jane Carey Kahn
Richard J. Kalish
Amelia Kaplan
Suzanne Karp
Joan Kozlowski
Warren Lane
Gretchen Leavitt
Sandra Levitan
Nancy A Light
Catherine Loudis
Daniel Mardesich
Joyce Martin
Diane Mayers
Charles and
Claire McBride
Tom McDonald
Kalpana Mehta
Melissa Meith

Craig Merrilees
Harriett Michael
David Miller
Judith Mirkin
Daniel Morgenstern
Phoebe Elinor Moyer
Phillip Muller
Mary M. Myers
Diane Neuhaus
Barbara Nielsen
Julia L Noble
Monica Norcia
Karyn OMohundro
Thomas Owen
Thomas Painchaud
Mary Papenfuss
Marcy Taylor Pattinson
Lois and Hi Patton
John Petrovsky
Joy Phoenix
Judith Rainin
Carol Randall
Tyler Risk
Carole G. Rosvold
Charles Runkel
Ginny Sandell
Jacqueline Schmidt
Laura Sheehan-Barron
Tom Short
Vicki Sievers

Judy K Simmons
Diana W Singer
Sandra Sloan
Steve Sockolov
Clara Solvason
Jean Spaulding
Marie Steckmest
Burnett Tregoning
Pauline Tomlinson
Phyllis Toomire
Lily Tsay
Nora Turner
Theresa Ulin
Ann Vercoutere
Carolyn Beach Welcome
Sally Williams
Tyler Ashton Yue
Tauheed Zaman
Rudy & Marcy Zavora

MEMBERS

Peter Lowry
Lynn Lohr
Allan Casalou
Amanda Weitman
Alice Timberlake Lehmann
Sally Secor
Jean Marchant
Susan Angel
Jean Witmer

Georgia Sagues
Burt Greenspan
Terry Seligman
Gregory Greunke
Ruth Moran
Linda Susan Nelson
Vic Revenko
Elaine McKenna
Steven Sumnick
Phyllis Toomire
Linda Wrxall
Karen Fry
Richard and
Marilyn Riede
Stephanie Douglass
Carol Winograd
Cam Eichar
Caroline Denicke
Ellen and Bob Goldman
Steve Price
Patrick Walsh
Joy Betterton
Starr Taber
Roger Jeanson
Ginny Turner
Maureen and
Ralph Kalbus
Suzanne Fogarty
Andy and
Ginny Anderson
Linda Daniels

Dee Kordek
Bonnie Marks
Alex and Tinka Ross
George Elias
Lisa Brow
Marijane Guy
Ruth Dell
Ann Peckenpaugh Becker
Mardi Leland
Lindsey McLorg
Deborah Sanborn
Mahsati Tsao
Cynthia Sima
Kathleen Leones
Sally Williams
Alexander B. Vollmer
Larry Eggan
Dvera Hadden
Jane Rostad
Steve A. Fables
Andrew Frankl
Mark and
Carole Friedlander
William and
Diane Mayers
Kathy Beckerley
Judy Wiesen
Bruce & Janie Burtch
Tamar Cohn

HONORARY LIFE MEMBERS

John Brebner
James Dunn
Elisabeth Levy
Anne Ripley
Tinka and Alex Ross
Ken Rowland
Robert Wilson

LEGACY CIRCLE

Ross Valley Players is
honored to recognize
the members of our
Legacy Circle. Their
generosity will ensure
the RVP curtain rises for
years to come.
Stephanie and
Tom Ahlberg
Carole and
Mark Friedlander
Ellen and Bob Goldman
Judith A. Jaslow
Dee Kordek
Victor Revenko
Tinka and Alex Ross
Georgia F. Sagues

Volunteer at Ross Valley Players!

Are you looking to make a difference?
Ross Valley Players invites you to our
vibrant volunteer team! With over 90 years
of delighting audiences at the Barn, you
can share in the magic of live performance.

As a volunteer, you'll support unforgettable
experiences—whether as a Ticket Taker,
Box Office Assistant, or Concessions
Cashier. Some volunteer for four or five
times a year and others even more often.
Volunteers enjoy free admission,
complimentary concessions, and
invitations to exclusive events!

Ready to spread joy and delight?
Contact our volunteer coordinators at
volunteer@rossvalleyplayers.com. We'll
have a great time with you on the team!



NAME A SEAT! Join the RVP Family in perpetuity!

Buy a plaque with your name or honor a
friend or relative. **\$500 fourth row and
beyond or seat of your choice**
Contact Ellen for seat plaque
information: noscaasi@comcast.net



DRAKE TERRACE

A KISCO LIFESTYLE COMMUNITY



Senior Living Meets Inspired Lifestyle

At Drake Terrace, we offer Independent Living, Assisted Living, and Memory Care in a welcoming community. Residents enjoy a full calendar of activities, including museum trips, concerts, plays, and lunch outings around the Bay Area. At Drake Terrace, choose your lifestyle and thrive with peace of mind.



**CALL 415.691.2701 OR SCAN THE
QR CODE TO EXPLORE ALL WE OFFER**